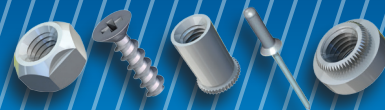




MATICA MB

YOUR BEST SUPPLIER
your best partner



RAZPORNE MATICE

RIVET NUTS



Excellent
Small & Medium Enterprises
Gospodarska zbornica Slovenije
Chamber of Commerce and Industry Slovenia



2024
AAA
Platinasta odličnost
★★★★★
MATICA MB d.o.o.
MATICA MB d.o.o.



THE BIGGEST NUT
IN THE WORLD



2025
www.maticamb.si

O nas

Podjetje Matica MB ni navadno trgovsko podjetje, ki samo preprodaja izdelke. Je podjetje, ki želi svojim kupcem približati optimalen, dovršen način sodelovanja.

Obvladovanje kvalitete blaga, prodajnega, nabavnega, logističnega procesa in stik s strankami so za naše podjetje prioriteta, h kateri stremimo, da lahko dosegamo najvišje standarde poslovanja.

To dokazujemo z vsakoletno rastjo, tehnološkimi presežki in izobraževanjem zaposlenih, ki so ključ, da lahko podjetje ustvarja uspešno zgodbo.

Največja matica na svetu, ki je postavljena pred podjetjem Matica MB in vpisana v Guinnessovo knjigo rekordov ima spodaj zapisan tudi moto podjetja: **KVALITETA – ZNANJE - SANJE**.

About Matica MB

Matica MB is not just an ordinary trading company that only resells the products. It is a company that wants to bring its customers an optimal, perfect way of cooperation.

Controlling the quality of goods, the sales, purchase, and logistics process, and contact with customers are priorities for our company, which we strive for in order to be able to achieve the highest business standards.

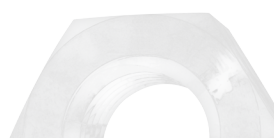
We prove this with our annual growth, technological surpluses and employee training, which are vital for the company's ability to create a successful story.

*The world's largest hex nut, placed in front of the company Matica MB, and is entered in Guinness Book of World Records has written motto of company: **QUALITY – KNOWLEDGE – DREAMS**.*

KONTAKT / CONTACT

Pod hrasti 3, 1218 Komenda, Slovenia

T +386 59 958 319
E info@maticamb.si
W www.maticamb.si



Cinkane razporne matice / Zinc plated rivet nuts

VRO	Veliki rob, odprte, pocinkane <i>Flat head, open, zinc plated</i>	5
VRZ	Veliki rob, zaprte, pocinkane <i>Flat head, closed, zinc plated</i>	
MRO	Mali rob, odprte, pocinkane <i>Small csk head, open, zinc plated</i>	6
MRZ	Mali rob, zaprte, pocinkane <i>Small head, closed, zinc plated</i>	
VRO-N	Veliki rob, odprte, narebrene, pocinkane <i>Flat head, open, knurled, zinc plated</i>	7
VRZ-N	Veliki rob, zaprte, narebrene, pocinkane <i>Flat head, closed, knurled, zinc plated</i>	
MRO-N	Mali rob, odprte, narebrene, pocinkane <i>Small head, open, knurled, zinc plated</i>	8
MRZ-N	Mali rob, zaprte, narebrene, pocinkane <i>Small head, closed, knurled, zinc plated</i>	
VVO	Vgreznjene, odprte, pocinkane <i>Countersunk, open, zinc plated</i>	9
VVO-N	Vgreznjene, odprte, narebrene, pocinkane <i>Countersunk, open, knurled, zinc plated</i>	
VRHO-P	Veliki rob, odprte, pol hexa, pocinkane <i>Flat head, open, half hexa, zinc plated</i>	10
VRHZ-P	Veliki rob, zaprte, pol hexa, pocinkane <i>Flat head, closed, half hexa, zinc plated</i>	
VRHO	Veliki rob, hexa, odprte, pocinkane <i>Flat head, full hexa, open, zinc plated</i>	11
VRHZ	Veliki rob, hexa, zaprte, pocinkane <i>Flat head, full hexa, closed, zinc plated</i>	
MRHO	Mali rob, hexa, odprte, pocinkane <i>Small head, full hexa, open, zinc plated</i>	12
MRHZ	Mali rob, hexa, zaprte, pocinkane <i>Small head, full hexa, closed, zinc plated</i>	
VRHO - P	Veliki rob, odprte, pol hexa, pocinkane <i>Small head, half hexa, open, zinc plated</i>	13
MRHO - P	Mali rob, zaprte, pol hexa, pocinkane <i>Small head, half hexa, closed, zinc plated</i>	

Nerjaveče razporne matice / Stainless steel Rivet nuts

NVRO	Veliki rob, odprte, nerjaveče jeklo <i>Flat head, open, stainless steel</i>	14
NVRZ	Veliki rob, zaprte, nerjaveče jeklo <i>Flat head, closed, stainless steel</i>	

NVRO-N	Veliki rob, odprte, narebrene, nerjaveče jeklo <i>Flat head, open, knurled, stainless steel</i>	15
NVRZ-N	Veliki rob, zaprte, narebrene, nerjaveče jeklo <i>Flat head, closed, knurled, stainless steel</i>	
NMRO	Mali rob, odprte, nerjaveče jeklo <i>Small head, open, stainless steel</i>	16
NMRZ	Mali rob, zaprte, nerjaveče jeklo <i>Small head, closed, stainless steel</i>	
NMRO-N	Mali rob, odprte, narebrene, nerjaveče jeklo <i>Small head, open, knurled, stainless steel</i>	17
NMRZ-N	Mali rob, zaprte, narebrene, nerjaveče jeklo <i>Small head, closed, knurled, stainless steel</i>	
NVVO	Vgreznjene, odprte, nerjaveče jeklo <i>Countersunk, open, stainless steel</i>	18
NVVO-N	Vgreznjene, odprte, narebrene, nerjaveče jeklo <i>Countersunk, open, knurled, stainless steel</i>	
NMRHO-P	Mali rob, odprte, pol hexa, nerjaveče jeklo <i>Small head, open, half hexa, stainless steel</i>	19
NMRHZ-P	Mali rob, zaprte, pol hexa, nerjaveče jeklo <i>Small head, closed, half hexa, stainless steel</i>	
NVRHO-P	Veliki rob, pol hexa, odprte, nerjaveče jeklo <i>Flat head, half hexa, open, stainless steel</i>	20
NVRHZ-P	Veliki rob, pol hexa, zaprte, nerjaveče jeklo <i>Flat head, half hexa, closed, stainless steel</i>	

Aluminijaste razporne matice / Aluminium rivet nuts

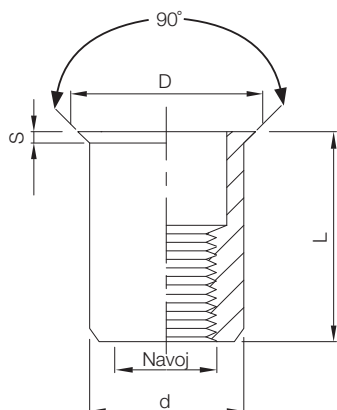
AVRO	Veliki rob, odprte, aluminijaste <i>Flat head, open, aluminum</i>	21
AVRO-N	Veliki rob, odprte, narebrene, aluminijaste <i>Flat head, open, knurled, aluminum</i>	
AMRO	Mali rob, odprte, aluminijaste <i>Small head, open, aluminum</i>	22
AMRO-N	Mali rob, odprte, narebrene, aluminijaste <i>Small head, open, knurled, aluminum</i>	

Orodja za razporne matice / Rivet nut tools

RIV912 RIV938S RIV998 RIV990 RIV790 RIV905	Pnevmatska orodja <i>Pneumatic tools</i>	23
RIV900 RIV901 RIV903	Ročna orodja <i>Hand tools</i>	23

Splošno o razpornih maticah / About rivet nuts

Razporne matice / Rivet nuts



Oznake / Label

D = premer glave / head diameter

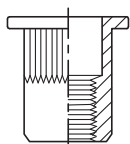
S = debelina glave / head thickness

L = dolžina / length

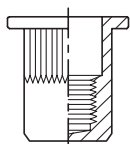
d = zunanji premer / outer diameter

Navoj = premer metričnega navoja / metric thread

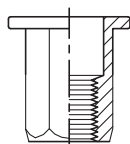
Glava / Head



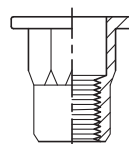
O
odprta / open



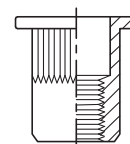
Z
zaprta / closed



H
6-kotna / full hex
(hexagon rivet nut)

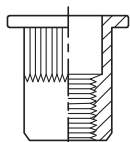


P
pol 6-kotna / semi hex

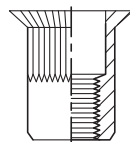


- N
okrogla narebričana /
round serrated

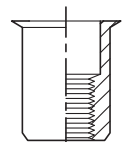
Oblika / Shape (body)



VR = glava z velikim robom /
flat (cylindrical) head



V = vgrezna glava /
countersink head



MR = glava z malim robom /
reduced countersink head

Material

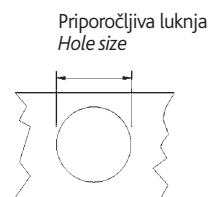
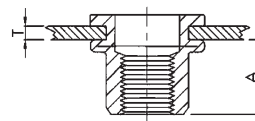
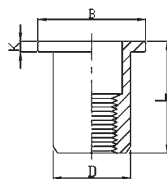
- = cinkano jeklo / steel

N = nerjaveče jeklo / stainless steel

A = aluminij / aluminium

Cinkane razporne matice / Zinc plated rivet nuts

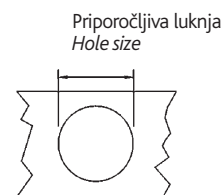
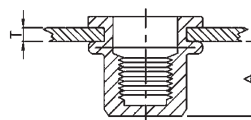
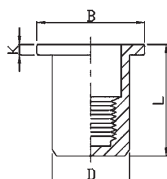
VRO



Tehnične podrobnosti / Technical details

Navoj Thread	Debelina ploč. Sheet thick. Min.- Max. T (mm)	A Re	Priloga luknja Hole size +0.1mm	D mm +0,07 / -0,10	B mm	K mm	L mm
M3	0.5-1.5	4.7	5.0	4.9	7.2	0.8	8.5
	1.5-2.5						9.5
M4	0.5-2.0	6.0	6.0	5.9	8.5	0.8	10.5
	2.0-3.5						12.0
M5	0.5-2.5	7.5	7.0	6.9	10	1	13.0
	2.5-5.0						17.0
M6	0.5-3.0	9.2	9.0	8.9	12.3	1.3	15.5
	3.0-5.5						18.0
M8	0.5-3.5	11.5	11.0	11.0	15.0	1.5	18.5
	3.5-6.0						21.0
M10	0.5-2.5	11.5	13.0	12.9	16.3	1.5	17.0
	2.5-4.0	12.5	13.0	12.9	17.0	1.6	21.0
	4.0-6.0	11.0	12.0	11.9	16.0	1.6	19.0
M12	1.0-4.0	13.5	15.0	14.9	18.0	1.7	22.0
	4.0-6.5	16	16	15.9	22.0	2	25.0

VRZ

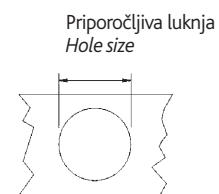
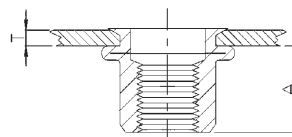
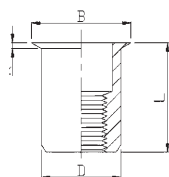


Tehnične podrobnosti / Technical details

Navoj Thread	Debelina ploč. Sheet thick. Min.- Max. T (mm)	A Re	Priloga luknja Hole size 0.1 / 0 mm	D mm +0,07 / -0,10	B mm	K mm	L mm
M3	0.5-1.5	10	5.0	4.9	7.2	0.8	13.3
M4	0.5-2.0	11.3	6.0	5.9	9.0	0.8	16.0
	2.0-4.0						18.0
M5	0.5-2.5	11.5	7.0	6.9	10.0	1.0	17.
	2.5-5.0						19.0
M6	0.5-3.0	12.7	9.0	8.9	12.3	1.3	19.2
	3.0-5.5						21.0
M8	0.5-3.0	14.8	11.0	10.9	15.0	1.5	21.5
	3.0-5.5						24.0
M10	1.0-4.0	19.2	13.0	12.9	17.0	1.6	27.0

Cinkane razporne matice / Zinc plated rivet nuts

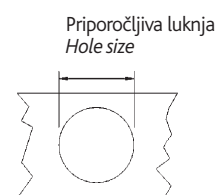
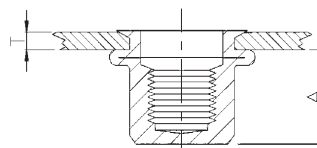
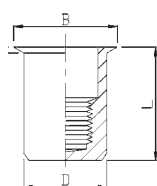
MRO



Tehnične podrobnosti / Technical details

Navoj Thread	Debelina ploč. Sheet thick. Min.- Max. T (mm)	A Re	Priporočljiva luknja Hole size 0.1 / 0 mm	D mm +0,07 / -0,10	B mm	K mm	L mm
M3	0.5-2.0	6.2	5.0	4.9	6.0	0.5	9.0
M4	0.5-2.0 2.0-4.0	6.5	6.0	5.9	7.0	0.5	10.5 13.0
M5	0.5-2.0 2.0-4.0	7.0	7.0	6.9	8.0	0.5	11.5 13.0
M6	0.5-2.5 2.5-5.0	8.5	9.0	8.9	10.5 10.0	0.6	14.0 17.0
M8	0.5-3.0 3.0-5.0	10.0	11.0	10.9	12.0	0.65	16.5 18.5
M10	0.5-3.0 3.0-5.0	13.0	13.0	12.9	14.1	0.7	17.7 21.0
M10	0.5-3.0	12.5	12.0	11.9	13.0	0.7	18.0

MRZ

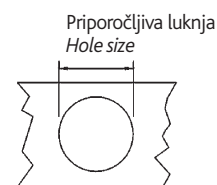
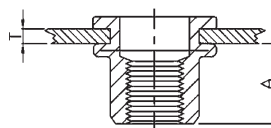
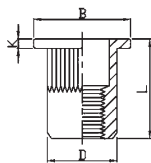


Tehnične podrobnosti / Technical details

Navoj Thread	Debelina ploč. Sheet thick. Min.- Max. T (mm)	A Re	Priporočljiva luknja Hole size 0.1 / 0 mm	D mm +0,07 / -0,10	B mm	K mm	L mm
M4	0.5-2.0 2.0-3.5	11.0	6.0	5.9	7.0	0.5	15.0 16.0
M5	0.5-2.0 2.0-3.5	12.5	7.0	6.9	8.0	0.5	16.5 17.5
M6	0.5-2.5 2.5-4.0	15.5	9.0	8.9	10.0	0.6	20.5 22.0
M8	0.5-3.0 2.5-4.5	17.0	11.0	10.9	12.0	0.65	23.0 24.5
M10	1.0-3.0 3.0-5.0	18.2	13.0	12.9	14.1	0.7	24.5 26.0

Cinkane razporne matice / Zinc plated rivet nuts

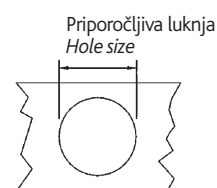
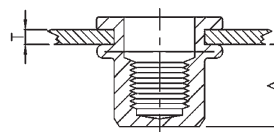
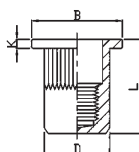
VRO-N



Tehnične podrobnosti / Technical details

Navoj Thread	Debelina ploč. Sheet thick. Min.- Max. T (mm)	A Re	Priporočljiva luknja Hole size 0.1 / 0 mm	D mm +0,07 / -0,10	B mm	K mm	L mm
M3	0.5-1.5	6.0	5.0	4.9	8.0	0.8	10.0
M4	0.5-2.0 2.0-3.5	6.0	6.0	5.9	9.0	0.8	10.5 12.0
M5	0.5-2.5 2.5-5.0	7.5 8.5	7.0	6.9	10.0	1.0	13.0 16.5
M6	0.5-3.0 3.0-5.5	9.2 10.5	9.0	8.9	12,3	1.3	15.5 19.5
M8	1.0-3.5 3.5-6.0	11.5	11.0	10.9	14,5	1.5	18.5 21.0
M10	1.0-4.0 4.0-6.5	13.5	13.0	12.9	17	1.7	21.5 24.0
M10	1.0-3.5	11.0	12.0	11.9	16.0	1.6	19.0
M12	3.5-6.0	16.0	16.0	15.9	22.0	2.0	28.0

VRZ-N

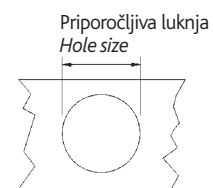
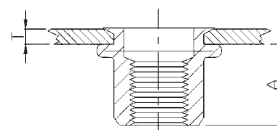
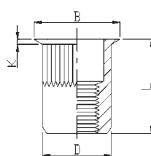


Tehnične podrobnosti / Technical details

Navoj Thread	Debelina ploč. Sheet thick. Min.- Max. T (mm)	A Re	Priporočljiva luknja Hole size 0.1 / 0 mm	D mm +0,07 / -0,10	B mm	K mm	L mm
M4	0.5-2.0 2.0-4.0	11.3	6.0	5.9	9.0	0.8	16.0 18.0
M5	0.5-2.5 2.5-5.0	11.5	7.0	6.9	10.5	1.0	17.0 19.0
M6	0.5-3.0 3.0-5.0	12.7	9.0	8.9	12.3	1.3	19.2 21.0
M8	0.5-3.0 3.0-5.5	14.8	11.0	10.9	15.0	1.5	21.5 24.0
M10	1.0-4.0	19.2	13.0	12.9	17.0	1.6	27.0

Cinkane razporne matice / Zinc plated rivet nuts

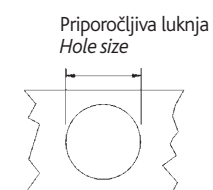
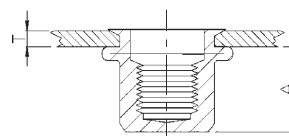
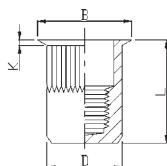
MRO-N



Tehnične podrobnosti / Technical details

Navoj Thread	Debelina ploč. Sheet thick. Min.- Max. T (mm)	A Re	Priporočljiva luknja Hole size 0.1 / 0 mm	D mm +0,07 / -0,10	B mm	K mm	L mm
M3	0.5-2.0	6.2	5.0	4.9	6.0	0.5	9.0
M4	0.5-2.0 2.0-4.0	7.0	6.0	5.9	7.0	0.5	11.2 13.0
M5	0.5-2.0 2.0-4.0	7.0	7.0	6.9	8.0	0.5	11.5 13.0
M6	0.5-2.5 2.5-5.0	8.5	9.0	8.9	10.0	0.6	14.0 16.0
M8	0.5-3.0 3.0-5.0	10.0	11.0	10.9	12.0	0.65	16.5 18.5
M10	1.0-3.5 3.5-6.0	12.5	13.0	12.9	14.0	0.7	19.5 22.0
M12	1.0-4.0	16,5	16.0	15.9	17.6	0.75	24.2

MRZ-N

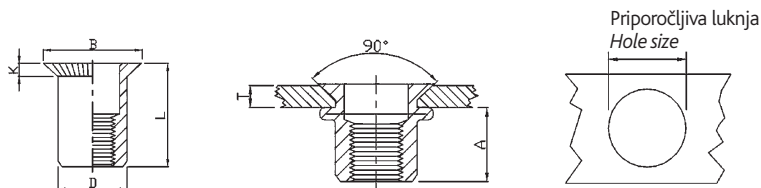


Tehnične podrobnosti / Technical details

Navoj Thread	Debelina ploč. Sheet thick. Min.- Max. T (mm)	A Re	Priporočljiva luknja Hole size 0.1 / 0 mm	D mm +0,07 / -0,10	B mm	K mm	L mm
M4	0.5-2.0 2.0-3.5	11.0	6.0	5.9	7.0	0.5	15.0 16.5
M5	0.5-2.0 2.0-3.5	12.5	7.0	6.9	8.0	0.5	16.5 18.0
M6	0.5-3.0 3.0-4.5	15.5	9.0	8.9	10.0	0.6	20.5 22.0
M8	0.5-3.0 3.0-4.5	17.0	11.0	10.9	12.0	0.65	23.0 24.5
M10	1.0-3.0 3.0-5.0	18.2	13.0	12.9	14.0	0.7	24.5 26.0

Cinkane razporne matice / Zinc plated rivet nuts

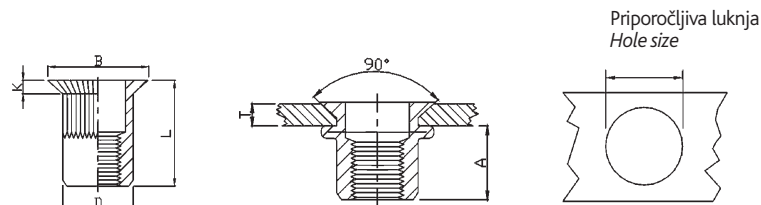
VVO



Tehnične podrobnosti / Technical details

Navoj Thread	Debelina ploč. Sheet thick. Min.- Max. T (mm)	A Re	Priporočljiva luknja Hole size 0.1 / 0 mm	D mm +0,07 / -0,10	B mm	K mm	L mm
M4	1.5-3.0	6.5	6.0	5.9	9.0	1.5	12
M5	1.5-3.5	7.5	7.0	6.9	10.0	1.5	13.0
M6	1.5-4.0	9.0	9.0	8.9	12.0	1.5	15.5
M8	2.0-4.5	11.0	11.0	10.9	14.0	1.5	18.5
M10	2.0-5.0	13.0	13.0	12.9	16.0	1.5	21.0

VVO-N

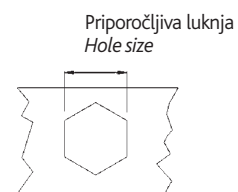
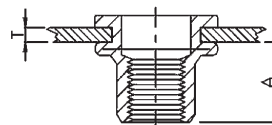
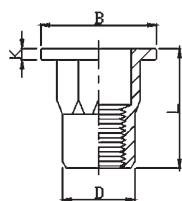


Tehnične podrobnosti / Technical details

Navoj Thread	Debelina ploč. Sheet thick. Min.- Max. T (mm)	A Re	Priporočljiva luknja Hole size 0.1 / 0 mm	D mm +0,07 / -0,10	B mm	K mm	L mm
M4	1.5-3.0	6.5	6.0	5.9	9.0	1.5	12.0
M5	1.5-3.5	7.5	7.0	6.9	10.0	1.5	13.0
M6	1.5-4.0	9.0	9.0	8.9	12.0	1.5	15.5
M8	2.0-4.5	11.0	11.0	10.9	14.0	1.5	18.5
M10	2.0-5.0	13.0	13,0	12,9	16.0	1.5	21.0
M12	2.0-5.0	16.5	16.0	15.9	19.0	1.5	24.0

Cinkane razporne matice / Zinc plated rivet nuts

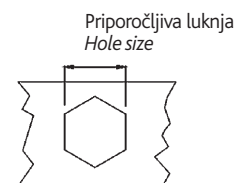
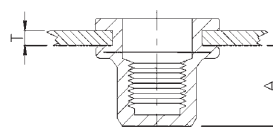
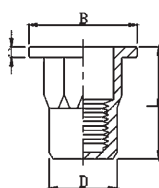
VRHO-P



Tehnične podrobnosti / Technical details

Navoj Thread	Debelina ploč. Sheet thick. Min.- Max. T (mm)	A Re	Priporočljiva luknja Hole size 0.1 / 0 mm	D mm +0,07 / -0,10	B mm	K mm	L mm
M4	0.5-2.0	6.5	6.0	5.9	9.0	0.8	11.0
M5	0.5-2.5	8.0	7.0	6.9	10.0	1.0	13.0
M6	0.5-3.0	8.5	9.0	8.9	12.7	1.35	15.0
M8	1.0-3.5	10.5	11.0	10.9	16.0	1.5	18.0
M10	1.0-3.5	12.5	13.0	12.9	18.0	1.7	21.0
M12	2.05-5.0	16.5	16.0	15.9	23.0	2.2	27.5

VRHZ-P

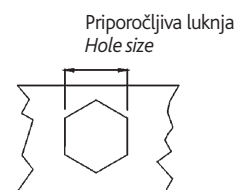
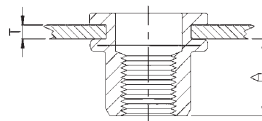
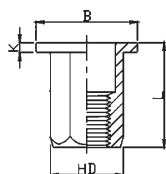


Tehnične podrobnosti / Technical details

Navoj Thread	Debelina ploč. Sheet thick. Min.- Max. T (mm)	A Re	Priporočljiva luknja Hole size 0.1 / 0 mm	D mm +0,07 / -0,10	B mm	K mm	L mm
M4	0.5-2.0	11.0	6.0	5.9	9.0	0.8	15.0
M5	0.5-2.5	13.5	7.0	6.9	10.0	1.0	18.0
M6	0.5-3.0	17.0	9.0	8.9	12.7	1.3	23.0
M8	1.0-3.5	19.0	11.0	10.9	16.0	1.5	26.0
M10	1.0-4.0	25.0	13.0	12.9	19.0	1.7	33.0

Cinkane razporne matice / Zinc plated rivet nuts

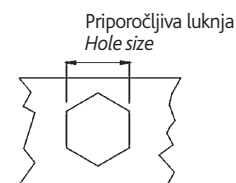
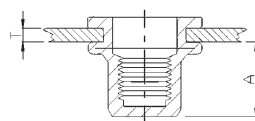
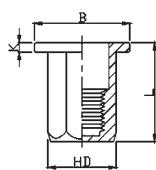
VRHO



Tehnične podrobnosti / Technical details

Navoj Thread	Debelina ploč. Sheet thick. Min.- Max. T (mm)	A Re	Priporočljiva luknja Hole size 0.1 / 0 mm	D mm +0,07 / -0,10	B mm	K mm	L mm
M4	0.5-2.0	6.5	6.0	5.9	9.0	0.8	11.0
M5	0.5-2.5	8.0	7.0	6.9	10.0	1.0	14.0
M6	0.5-3.0	8.5	9.0	8.9	13	1.35	16.0
M8	1.0-3.5	10.5	11.0	10.9	16.0	1.5	18.0
M10	1.0-3.5	12.5	13.0	12.9	19.0	1.7	23.0
M12	2.0-5.0	16.5	16.0	15.9	23.0	2.0	27.0

VRHZ

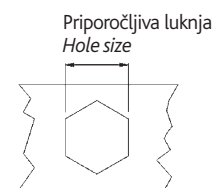
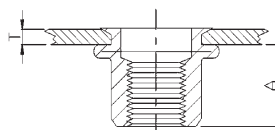
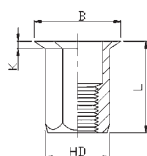


Tehnične podrobnosti / Technical details

Navoj Thread	Debelina ploč. Sheet thick. Min.- Max. T (mm)	A Re	Priporočljiva luknja Hole size 0.1 / 0 mm	D mm +0,07 / -0,10	B mm	K mm	L mm
M4	0.5-2.0	11.0	6.0	5.9	9.0	1.0	15.0
M5	0.5-2.5	13.5	7.0	6.9	10.0	1.0	18.0
M6	0.5-3.0	17,0	9.0	8.9	12.7	1.5	23,0
M8	1.0-3.5	19.0	11.0	10.9	16.0	1.5	26.0
M10	1.0-4.0	25.0	13.0	12.9	19.0	2.0	33.0

Cinkane razporne matice / Zinc plated rivet nuts

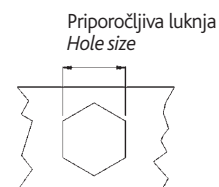
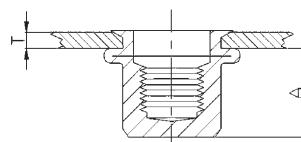
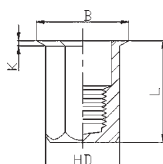
MRHO



Tehnične podrobnosti / Technical details

Navoj Thread	Debelina ploč. Sheet thick. Min.- Max. T (mm)	A Re	Priporočljiva luknja Hole size 0.1 / 0 mm	D mm +0,07 / -0,10	B mm	K mm	L mm
M4	0.5-2.5 2.5-5.0	6.7	6.0	5.9	7.0	0.5	11.0 13.5
M5	0.5-3.0 3.0-5.0	9.0	7.0	6.9	8.0	0.5	14.5 16.0
M6	1.0-3.5 3.5-6.0	10.0	9.0	8.9	10.0	0.6	16.0 18.0
M8	1.0-4.0 4.0-6.0	11.5	11.0	10.9	12.0	0.65	18.0 20.0
M10	1,0-3.5 3.5-6.0	12.5 14,5	13.0	12.9	14.5	0.75	19.0 23.5

MRHZ

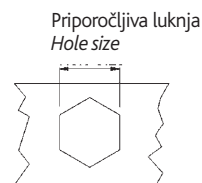
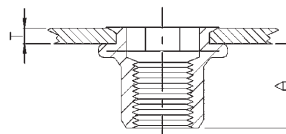
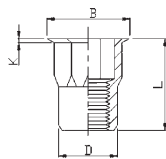


Tehnične podrobnosti / Technical details

Navoj Thread	Debelina ploč. Sheet thick. Min.- Max. T (mm)	A Re	Priporočljiva luknja Hole size 0.1 / 0 mm	D mm +0,07 / -0,10	B mm	K mm	L mm
M4	0.5-2.5	12.3	6.0	5.9	7.0	0.5	16.0
M5	0.5-3.0	15.2	7.0	6.9	8.0	0.5	20.0
M6	0.5-3.5	14.5	9.0	8.9	10.0	0.6	20.5
M8	1.0-4.0	17.0	11.0	10.9	12.0	0.65	23.0
M10	1.04-4.5	20.0	13.0	12.9	14.5	0.75	28.5

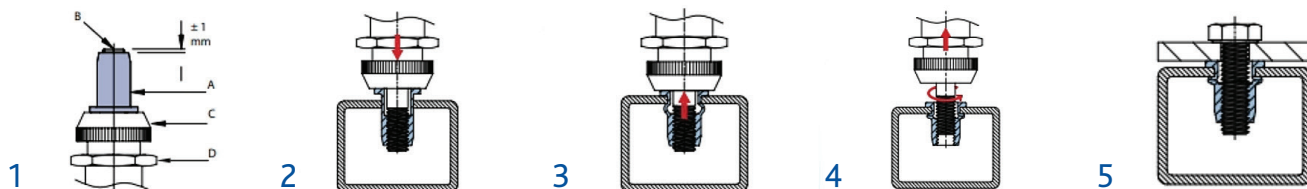
Cinkane razporne matice / Zinc plated rivet nuts

MRHO-P



Tehnične podrobnosti / Technical details

Navoj Thread	Debelina ploč. Sheet thick. Min.- Max. T (mm)	A Re	Priporočljiva luknja Hole size 0.1 / 0 mm	D mm +0,07 / -0,10	B mm	K mm	L mm
M4	0.5-2.0 2.0-3,5	8.3	6.0	5.9	7.0	0.5	12.0 13.5
M5	0.5-2.5 2,5-4.0	8.7	7.0	6.9	8.0	0.5	13.0 14.5
M6	1.0-3.5 3.0-5,5	10.5	9.0	8.9	10.0	0.6	16.0 18.0
M8	1.0-3.5 3,5-6.0	11.3	11.0	10.9	12.0	0.65	17.5 19.7
M10	1.0-4.0 4.0-6,5	12,8	13.0	12.9	14.5	0.75	21.0 24.0



1. KORAK: Privijte razporno matico (A) na trn (B) orodja za nameščanje. Pri odprti izvedbi naj trn štrli približno 1 mm. Pri zaprtih kovičastih maticah nadaljujte s privijanjem, dokler ne začutite upora. Privijte nakovalo (C) ob glavo razporne matice in ga blokirajte z varovalno matico (D).

2. KORAK: Vstavite razporno matico, nameščeno na orodju za nameščanje, v luknjo obdelovanca.

3. KORAK: Namestite razporno matico. Deformacijska razporna matice zdaj tvori protiglavo (bulbo) na spodnji strani obdelovanca.

4. KORAK: Odvijte trn z razporne matice.

5. KORAK: Razporna matica je zdaj nameščena. Zdaj lahko enostavno vstavite vijak ali vijak za sestavljanje druge komponente.

STEP 1: Screw blind rivet nut (A) on the mandrel (B) of the setting tool. In the case of the open version, the mandrel should protrude about 1 mm. For closed rivet nuts, continue screwing until you feel resistance. Screw the anvil (C) against the head of the rivet nut and block it with the locking nut (D).

STEP 2: Insert the blind rivet nut, mounted on the setting tool, into the hole of the workpiece.

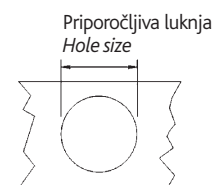
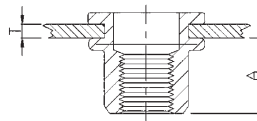
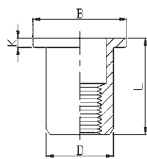
STEP 3: Set the rivet nut. The rivet's deformation chamber now forms the counter head (bulb) on the underside of the workpiece.

STEP 4: Unscrew the mandrel from the rivet nut.

STEP 5: The blind rivet nut is now set. You can now easily insert your bolt or screw to assemble another component.

Nerjaveče razporne matice / *Stainless steel rivet nuts*

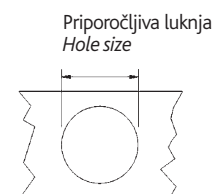
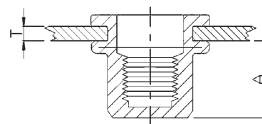
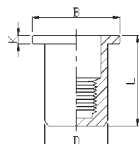
NVRO (inox)



Tehnične podrobnosti / *Technical details*

Navoj Thread	Debelina ploč. Sheet thick. Min.- Max. T (mm)	A Re	Priporočljiva luknja Hole size 0.1 / 0 mm	D mm +0,07 / -0,10	B mm	K mm	L mm
M4	0.5-2.0	6.0	6.0	5.9	8.5	0.8	10.5
M5	0.5-2.5	7.5	7.0	6.9	10.0	1.0	13.0
M6	0.5-3.0	9.2	9.0	8.9	12.3	1.3	15.5
M8	1.0-3.5	11.5	11.0	10.9	15.0	1.5	18.5
M10	1.0-4.0	12.5	13.0	12.9	17.0	1.6	21.0

NVRZ (inox)

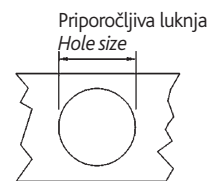
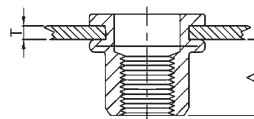
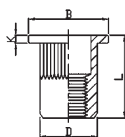


Tehnične podrobnosti / *Technical details*

Navoj Thread	Debelina ploč. Sheet thick. Min.- Max. T (mm)	A Re	Priporočljiva luknja Hole size 0.1 / 0 mm	D mm +0,07 / -0,10	B mm	K mm	L mm
M4	0.5-2.0	11.3	6.0	5.9	9.0	0.8	16.0
M5	0.5-2.5	13.9	7.0	6.9	10.0	1.0	19.0
M6	0.5-3.0	15.0	9.0	8.9	12.3	1.3	21.0
M8	1.0-3.5	18.2	11.0	10.9	15.5	1.5	25.0
M10	1.0-4.0	19.4	13.0	12.9	17.0	1.6	27.0

Nerjaveče razporne matice / *Stainless steel rivet nuts*

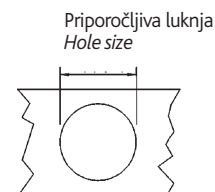
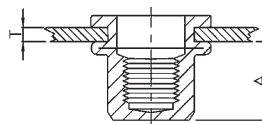
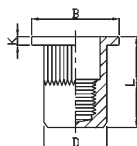
NVRO-N (inox)



Tehnične podrobnosti / *Technical details*

Navoj Thread	Debelina ploč. Sheet thick. Min.- Max. T (mm)	A Re	Priporočljiva luknja Hole size 0.1 / 0 mm	D mm +0,07 / -0,10	B mm	K mm	L mm
M4	0.5-2.0 2.0-4.0	6.5	6.0	5.9	9.0	0.8	10.5 12.5
M5	0.5-2.5 2.0-4.0	8.0	7.0	6.9	10.0	1.0	13.0 16.0
M6	0.5-3.0 3.5	9.2	9.0	8.9	12.3	1.3	15.5 17.5
M8	1.0-3.5 3.5-6.0	11.5	11.0	10.9	14.5	1.5	18.5 21.0
M10	1.0-4.0 3.5-6.0	13.5	13.0	12.9	17.0	1.6	21.0 24.0
M12	1.5-4.0	14.5	16.0	15.9	23.0	2.0	25.0

NVRZ-N (inox)

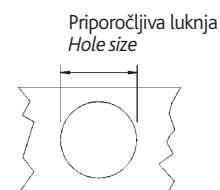
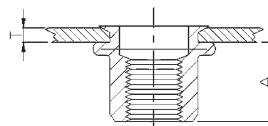
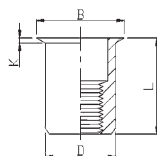


Tehnične podrobnosti / *Technical details*

Navoj Thread	Debelina ploč. Sheet thick. Min.- Max. T (mm)	A Re	Priporočljiva luknja Hole size 0.1 / 0 mm	D mm +0,07 / -0,10	B mm	K mm	L mm
M4	0.5-2.0	11.8	6.0	5.9	9.0	0.8	16.0
M5	0.5-2.5	12.0	7.0	6.9	10.0	1.0	17.0
M6	0.5-3.0	12.7	9.0	8.9	12.3	1.3	19.2
M8	1.0-3.5	14.2	11.0	10.9	15.0	1.5	21.5
M10	1.0-4.0	18.0	13.0	12.9	17.0	1.6	27.0

Nerjaveče razporne matice / *Stainless steel rivet nuts*

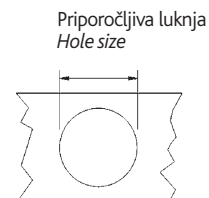
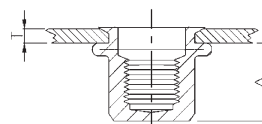
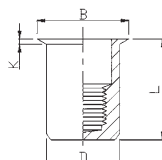
NMRO (inox)



Tehnične podrobnosti / *Technical details*

Navoj <i>Thread</i>	Debelina ploč. <i>Sheet thick.</i> Min.- Max. T (mm)	A Re	Priporočljiva luknja <i>Hole size</i> 0.1 / 0 mm	D mm +0,07 / -0,10	B mm	K mm	L mm
M4	0.5-2.0	6.5	6.0	5.9	7.0	0.5	10.5
M5	0.5-2.0	7.0	7.0	6.9	8.0	0.5	11.5
M6	0.5-2.5	8.5	9.0	8.9	10.0	0.6	14.0
M8	0.5-3.0	10.5	11.0	10.9	12.0	0.65	16.5
M10	1.0-3.5	11.5	13.0	12.9	14.0	0.7	17.7

NMRZ (inox)

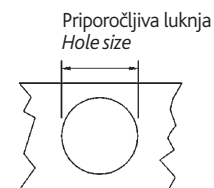
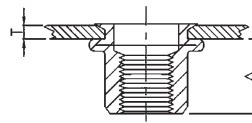
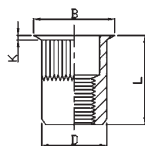


Tehnične podrobnosti / *Technical details*

Navoj <i>Thread</i>	Debelina ploč. <i>Sheet thick.</i> Min.- Max. T (mm)	A Re	Priporočljiva luknja <i>Hole size</i> 0.1 / 0 mm	D mm +0,07 / -0,10	B mm	K mm	L mm
M4	0.5-2.0	11.0	6.0	5.9	7.0	0.5	15.0
M5	0.5-2.0	12.5	7.0	6.9	8.0	0.5	16.5
M6	0.5-2.5	15.5	9.0	8.9	10.0	0.6	20.5
M8	0.5-3.0	17.6	11.0	10.9	12.0	0.65	23.0
M10	1.0-3.5	18.3	13.0	12.9	14.0	0.7	24.5

Nerjaveče razporne matice / *Stainless steel rivet nuts*

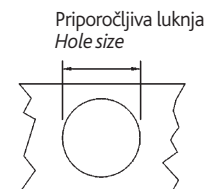
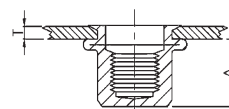
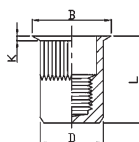
NMRO-N (inox)



Tehnične podrobnosti / *Technical details*

Navoj Thread	Debelina ploč. Sheet thick. Min.- Max. T (mm)	A Re	Priporočljiva luknja Hole size 0.1 / 0 mm	D mm +0,07 / -0,10	B mm	K mm	L mm
M3	0.5-2	5.0	5.0	4.9	6.0	0.5	9.0
M4	0.5-2.0 2.0-4.0	6.5	6.0	5.9	7.0	0.5	10.5 13.0
M5	0.5-2.0 2.0-4.0	7.0	7.0	6.9	8.0	0.5	11.5 13.5
M6	0.5-2.5 2.5-5.0	8.5	9.0	8.9	10.0	0.6	14.0 16.0
M8	0.5-3.0 3.0-6.0	10.5	11.0	10.9	12.0	0.65	16.5 18.5
M10	1.0-3.5 3.5-6.0	11.5	13.0	12.9	14.0	0.7	17.7 21.5
M12	1.0-4.0	15.5	16.0	15.9	17.6	0.75	24.2

NMRZ-N (inox)

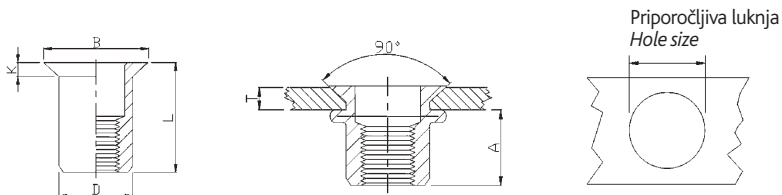


Tehnične podrobnosti / *Technical details*

Navoj Thread	Debelina ploč. Sheet thick. Min.- Max. T (mm)	A Re	Priporočljiva luknja Hole size 0.1 / 0 mm	D mm +0,07 / -0,10	B mm	K mm	L mm
M4	0.5-2.0	11.2	6.0	5.9	7.0	0.5	15.0
M5	0.5-2.0	11.5	7.0	6.9	8.0	0.5	16.5
M6	0.5-2.5	15.0	9.0	8.9	10.0	0.6	20.5
M8	0.5-3.0	17.5	11.0	10.9	12.0	0.65	23.0
M10	1.0-3.5	18.0	13.0	12.9	14.0	0.7	24.5

Nerjaveče razporne matice / *Stainless steel rivet nuts*

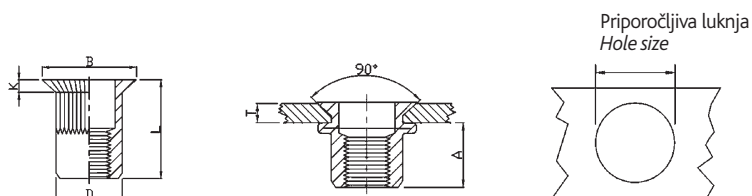
NVVO (inox)



Tehnične podrobnosti / *Technical details*

Navoj Thread	Debelina ploč. Sheet thick. Min.- Max.T (mm)	A Re	Priporočljiva luknja Hole size 0.1 / 0 mm	D mm +0,07 / -0,10	B mm	K mm	L mm
M4	1.5-3.0	7.5	6.0	5.9	9.0	1.5	12.0
M5	1.5-3.5	7.8	7.0	6.9	10.0	1.5	13.0
M6	1.5-4.0	9.0	9.0	8.9	12.0	1.5	15.5
M8	2.0-4.5	12.0	11.0	10,9	14.0	1.5	18.5
M10	2.0-5.0	13.0	13.0	12.9	16.0	1.5	21.0

NVVO-N (inox)

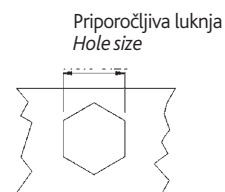
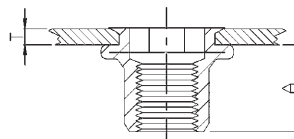
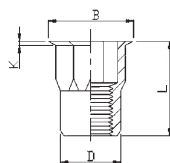


Tehnične podrobnosti / *Technical details*

Navoj Thread	Debelina ploč. Sheet thick. Min.- Max.T (mm)	A Re	Priporočljiva luknja Hole size 0.1 / 0 mm	D mm +0,07 / -0,10	B mm	K mm	L mm
M4	1.5-3.0	7.5	6.0	5.9	9.0	1.5	12.0
M5	1.5-3.5	7.8	7.0	6.9	10.0	1.5	13.0
M6	1.5-4.0	9.0	9.0	8.9	12.0	1.5	15.5
M8	2.0-4.5	12.0	11.0	10,9	14.0	1.5	18.5
M10	2.0-5.0	13.0	13.0	12.9	16.0	1.5	21.0

Nerjaveče razporne matice / *Stainless steel rivet nuts*

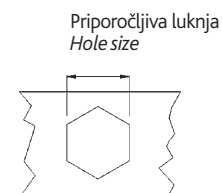
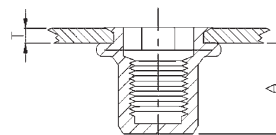
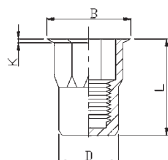
NMRHO-P (inox)



Tehnične podrobnosti / *Technical details*

Navoj Thread	Debelina ploč. Sheet thick. Min.- Max. T (mm)	A Re	Priporočljiva luknja Hole size 0.1 / 0 mm	D mm +0,07 / -0,10	B mm	K mm	L mm
M3	0.5-1.5	5.0	5.0	4.9	6.0	0.5	9.0
M4	0.5-2.0 2.0-3.5	8.0	6.0	5.9	7.0	0.5	12.0 13.5
M5	0.5-2.5 2.5-4.0	8.2	7.0	6.9	8.0	0.5	13.0 14.5
M6	0.5-3.0 3.0-5.5	10.7	9.0	8.9	10.0	0.6	16.0 18.0
M8	1.0-3.5 3.5-6.0	11.2	11.0	10.9	12.0	0.65	17.5 20.2
M10	1.0-4.0 4.0-6.5	13.5	13.0	12.9	14.5	0.75	21.0 24.0
M12	1.0-4.0	15.5	16.0	15.9	17.5	0.75	24.0

NMRHZ-P (inox)

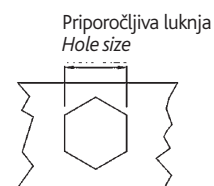
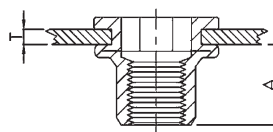
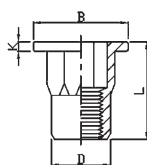


Tehnične podrobnosti / *Technical details*

Navoj Thread	Debelina ploč. Sheet thick. Min.- Max. T (mm)	A Re	Priporočljiva luknja Hole size 0.1 / 0 mm	D mm +0,07 / -0,10	B mm	K mm	L mm
M4	0.5-2.0	11.5	6.0	5.9	7.0	0.5	15.5
M5	0.5-2.5	13.5	7.0	6.9	8.0	0.5	18.0
M6	0.5-3.5	15.8	9.0	8.9	10.0	0.6	21.5
M8	1.0-3.5	18.2	11.0	10.9	12.0	0.65	24.0
M10	1.0-4.0	23.2	13.0	12.9	14.5	0.75	30.5

Nerjaveče razporne matice / *Stainless steel rivet nuts*

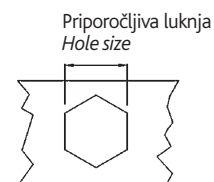
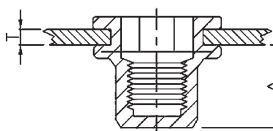
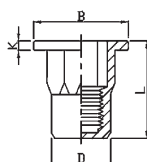
NVRHO-P (inox)



Tehnične podrobnosti / *Technical details*

Navoj Thread	Debelina ploč. Sheet thick. Min.- Max.T (mm)	A Re	Priporočljiva luknja Hole size 0.1 / 0 mm	D mm +0,07 / -0,10	B mm	K mm	L mm
M4	0.5-2.0	7.2	6.0	5.9	9.0	0.8	11.0
M5	0.5-2.5	7.5	7.0	6.9	10.0	1.0	12.0
M6	0.5-3.0	9.2	9.0	8.9	12.7	1.3	15.5
M8	1.0-3.5	11.0	11.0	10.9	16.0	1.5	18.0
M10	1.0-4.0	13.2	13.0	12.9	18.0	1.7	21.0

NVRHZ-P (inox)

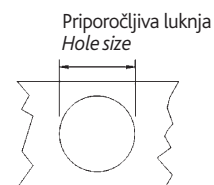
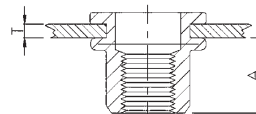
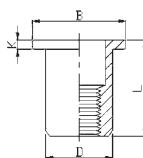


Tehnične podrobnosti / *Technical details*

Navoj Thread	Debelina ploč. Sheet thick. Min.- Max.T (mm)	A Re	Priporočljiva luknja Hole size 0.1 / 0 mm	D mm +0,07 / -0,10	B mm	K mm	L mm
M4	0.5-2.0	11.5	6.0	5.9	9.0	1.0	16.0
M5	0.5-2.5	13.5	7.0	6.9	10.0	1.0	18.5
M6	0.5-3.0	17.0	9.0	8.9	12.7	1.5	23.0
M8	1.0-3.5	18.2	11.0	10.9	16.0	1.5	25.0
M10	1.0-4.0	25.0	13.0	12.9	19.0	1.7	33.0

Aluminijaste razporne matice / Aluminium rivet nuts

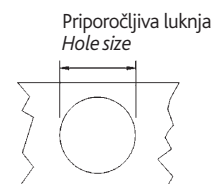
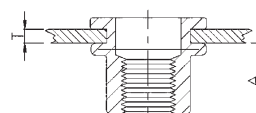
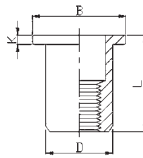
AVRO (aluminij)



Tehnične podrobnosti / Technical details

Navoj Thread	Debelina ploč. Sheet thick. Min.- Max. T (mm)	A Re	Priporočljiva luknja Hole size 0.1 / 0 mm	D mm +0,07 / -0,10	B mm	K mm	L mm
M4	0.5-2.0	6.0	6.0	5.9	8.8	0.8	10.5
M5	0.5-2.5	7.5	7.0	6.9	10.0	1.0	13.0
M6	0.5-2.5	9.2	9.0	8.9	12.3	1.5	15.0
M8	1.0-3.0	10.2	11.0	10.9	14.3	1.5	16.5
M10	1.0-4.0	11.5	13.0	12.9	16.3	1.6	19.0

AVRO-N (aluminij)

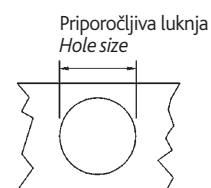
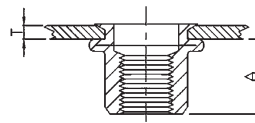
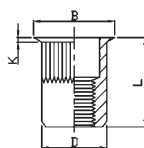


Tehnične podrobnosti / Technical details

Navoj Thread	Debelina ploč. Sheet thick. Min.- Max. T (mm)	A Re	Priporočljiva luknja Hole size 0.1 / 0 mm	D mm +0,07 / -0,10	B mm	K mm	L mm
M4	0.5-2.0	6.0	6.0	5.9	8.8	0.8	10.5
M5	0.5-2.5	7.5	7.0	6.9	10.0	1.0	13.0
M6	0.5-2.5	9.2	9.0	8.9	12.3	1.5	15.0
M8	1.0-3.0	10.2	11.0	10.9	14.3	1.5	16.5
M10	1.0-4.0	11.5	13.0	12.9	16.3	1.6	19.0

Aluminijaste razporne matice / Aluminium rivet nuts

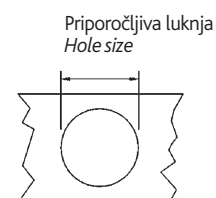
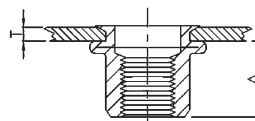
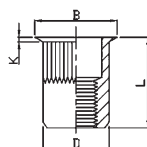
AMRO



Tehnične podrobnosti / Technical details

Navoj Thread	Debelina ploč. Sheet thick. Min.- Max. T (mm)	A Re	Priporočljiva luknja Hole size 0.1 / 0 mm	D mm +0,07 / -0,10	B mm	K mm	L mm
M4	0.5-2.0	6.0	6.0	5.9	7.0	0.5	10.5
M5	0.5-2.0	7.5	7.0	6.9	8.0	0.5	11.5
M6	0.5-2.5	9.2	9.0	8.9	10.0	0.6	14.0
M8	0.5-2.5	10.2	11.0	10.9	12.0	0.65	15.5
M10	1.0-3.0	11.5	13.0	12.9	14.1	0.7	17.7

AMRO-N

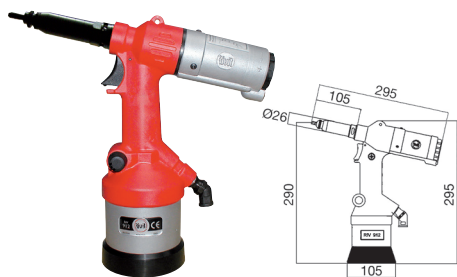


Tehnične podrobnosti / Technical details

Navoj Thread	Debelina ploč. Sheet thick. Min.- Max. T (mm)	A Re	Priporočljiva luknja Hole size 0.1 / 0 mm	D mm +0,07 / -0,10	B mm	K mm	L mm
M4	0.5-2.0	6.0	6.0	5.9	7.0	0.5	10.5
M5	0.5-2.0	7.5	7.0	6.9	8.0	0.5	11.5
M6	0.5-2.5	9.2	9.0	8.9	10.0	0.6	14.0
M8	0.5-2.5	10.2	11.0	10.9	12.0	0.65	15.5
M10	1.0-3.0	11.5	13.0	12.9	14.1	0.7	17.7

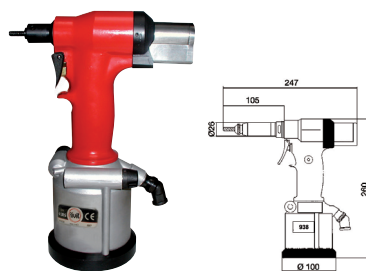
Orodja za razporne matice / Rivet nut tools

RIV912



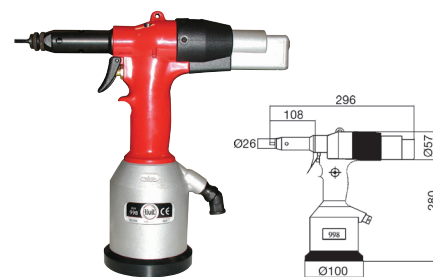
Uporaben razpon Range	M3-M12
Hod Stroke (mm)	1,0-6,5
Delovni pritisk Pressure (bar)	5-7
Teža Weight (kg)	2,3

RIV938S



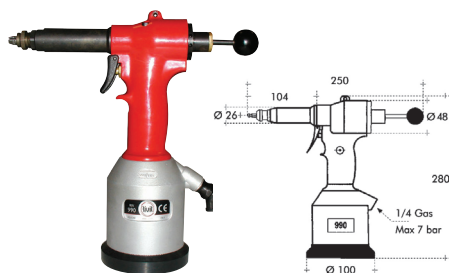
Uporaben razpon Range	M3-M6
Hod Stroke (mm)	6,5
Delovni pritisk Pressure (bar)	5-7
Teža Weight (kg)	1,7

RIV998



Uporaben razpon Range	M3-M12
Hod Stroke (mm)	0-6,5
Delovni pritisk Pressure (bar)	5-7
Teža Weight (kg)	2,4

RIV990



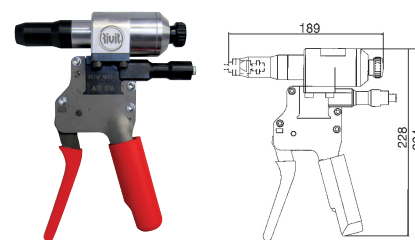
Uporaben razpon Range	M4-M8
Hod Stroke (mm)	6,0
Delovni pritisk Pressure (bar)	5-7
Teža Weight (kg)	2,3

RIV740



Uporaben razpon Range	M3-M12
Hod Stroke (mm)	10
Baterija Batterie	18V / 2,0 Ah / 36Wh
Teža Weight (kg)	2,1

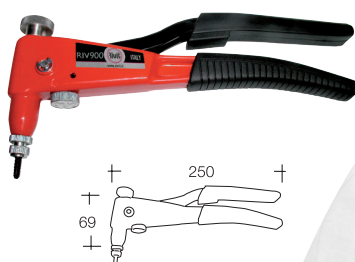
RIV905



Uporaben razpon Range	M3-M12
Hod Stroke (mm)	90
Teža Weight (kg)	1,7

Ročna orodja / Hand tools

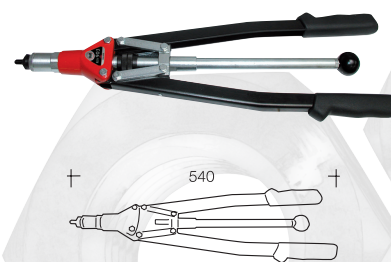
RIV900



RIV901



RIV903





MATICA MB

VAŠ NAJBOLJŠI DOBAVITELJ
vaš najboljši partner



RECORD
HOLDER



MATICA MB d.o.o., Pod hrasti 3, 1218 Komenda, Slovenija

T +386 59 958 319

E info@maticamb.si

W www.maticamb.si